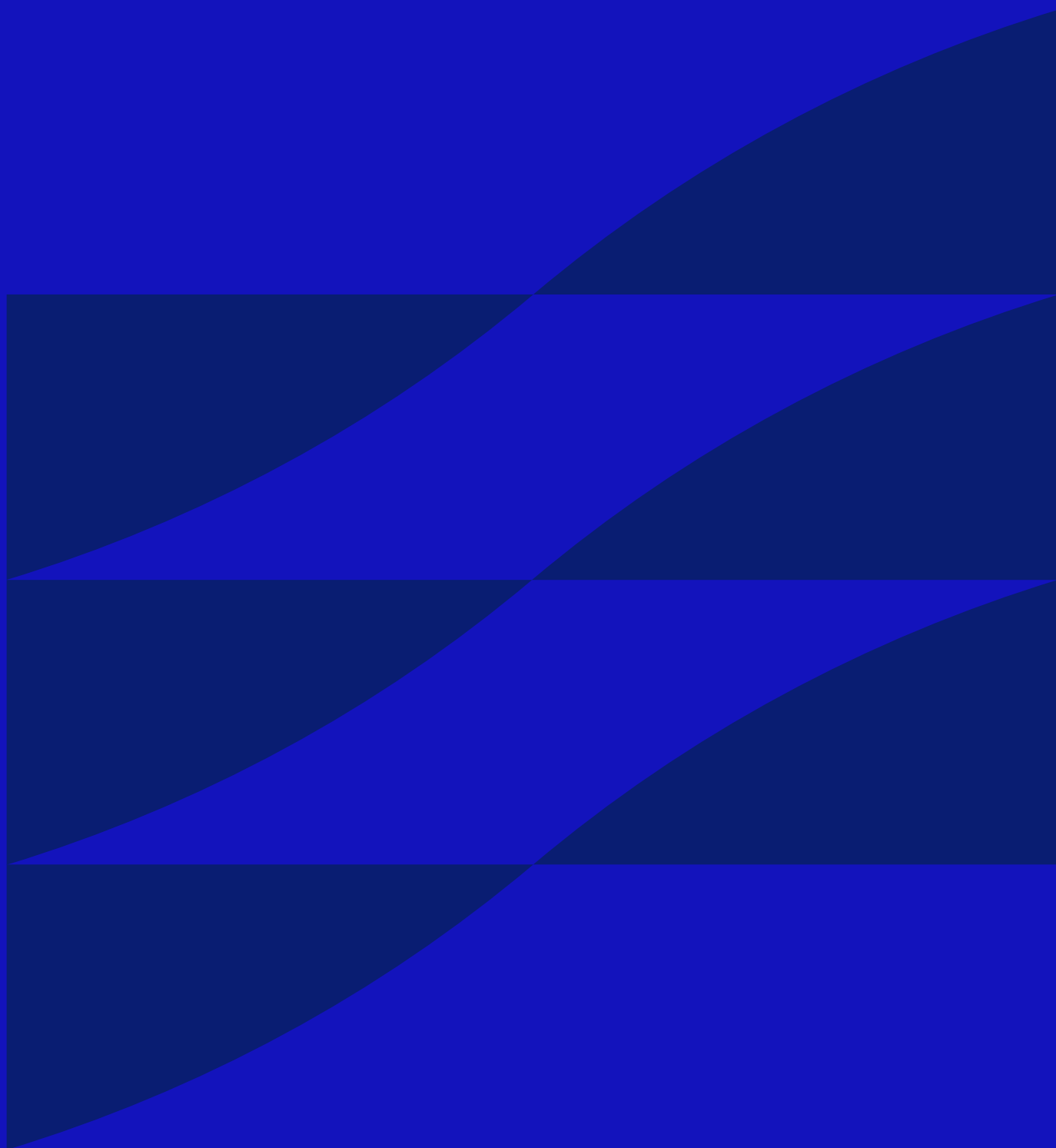


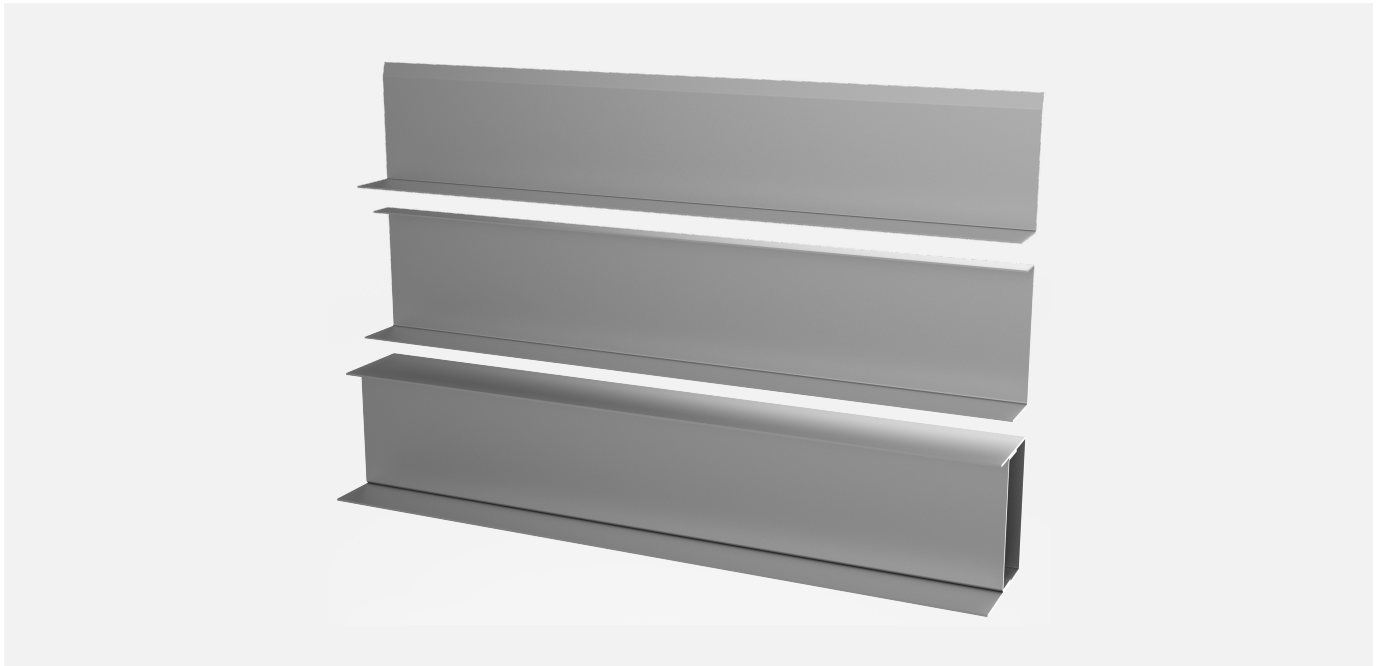
Lintels



Lintels



Check for updates



Handling

Remove items from transportation vehicle in accordance with local site safety requirements (subject to HSE regulations). Be careful of potential sharp edges and pallet stability following transportation.

Consider if it is safer to move the pallet (as a whole) to a specific location within the site which is best suited to the general distribution of the individual item(s), or if it is safer to break the pallet up (into individual lintels) for distribution throughout the site.

The pallet of lintels should be placed in the correct location for distribution. Remove individual items from the pallet using mechanical equipment if necessary. If not, check the lifting guidelines in line with HSE regulations to determine the number of individuals required to move them safely. Items stored adjacent to their installation location should not pose a hazard to site operatives. If it is safer to break up the pallet into individual items for distribution, follow the same process to move them safely.

Storage and transportation

ACS approved haulier should ensure that the load is safe and secure for the journey, and pallets are unloaded and reloaded at the distribution centre in a considered, safe and orderly fashion.

ACS recommends that all pallets should be inspected immediately following the (on site) off-loading process, for any obvious signs of damage.

Installation

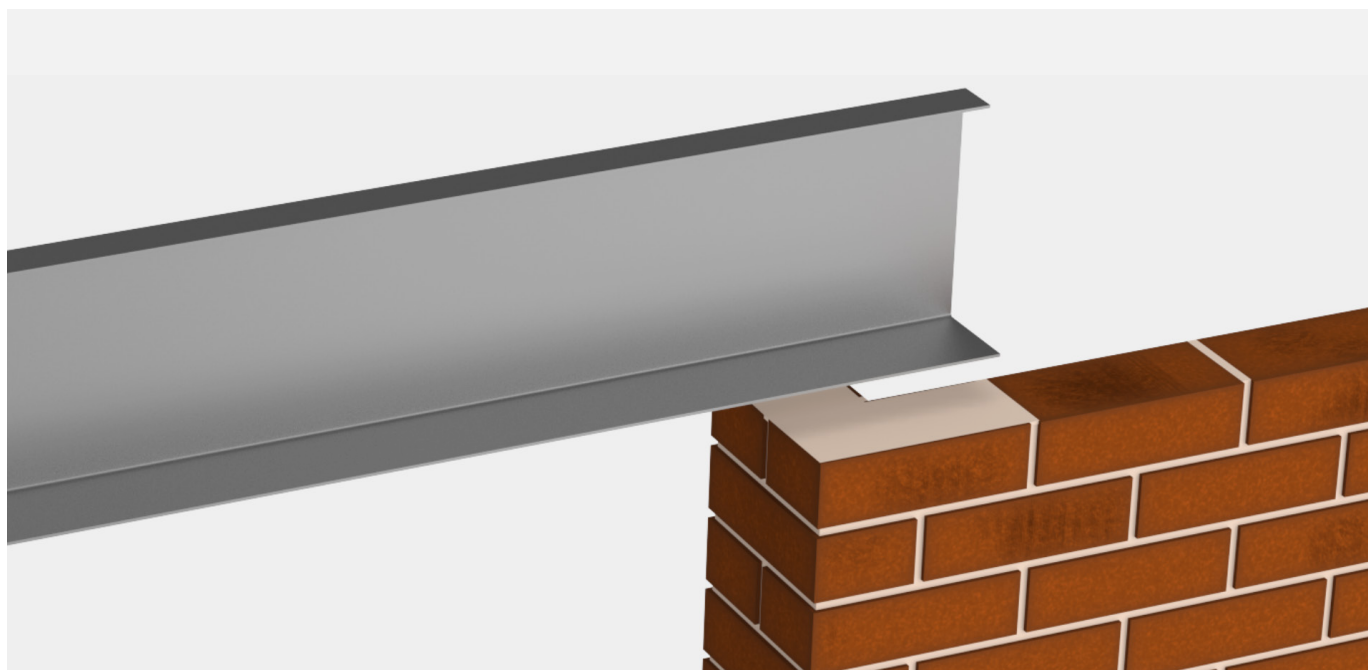
To ensure safe and secure installation, we recommend the following:

- A trained operative should be responsible for the installation, working in accordance with current HSE manual handling legislation.
- Refer to the relevant ACS product data sheet for specific installation instructions.

Lintels



Check for updates



Guidance for interface with other products

It is expected that all issues of interface with other products should be fully addressed by the project design team (Architect, structural engineer, facade engineer etc.) through the design and approval process. If clashes are apparent on site, please stop work immediately and consult project design team.

Guidance to achieve stated performance

In order to achieve the performance stated on our data sheets item(s) must be installed in strict accordance with the information provided. Lintels must be propped during installation, and bear on to fresh mortar at each end. Please see product datasheet for further details.

Specialist equipment and tools

Most products can be installed using a general construction workers toolkit. See delivery documentation for specific instructions.

Specific competence required

Whilst the skill set required for the installation of a typical product would be covered by those of a general (construction industry) fitter, ACS recommend the Association of Brickwork Contractors or similar short courses.

Implications for maintenance warranties, guarantees and insurance

All warranties, guarantees and insurances are null and void if the products are incorrectly installed. There are no maintenance requirements for ACS products. Please refer to ACS product warranty and insurance documents for full details of specific coverage.

Lintels



Check for updates

Inspection, testing, commissioning, and record keeping requirements

Inspection and record keeping requirements would be as specified within the building's 'operation and maintenance' manual, insofar as it is concerned with the general fabric of the building.

Sequencing of works

Lintel must bear either side on to fresh mortar with the lintel propped during installation. Wall ties must be located within 300mm vertically of the support level. Please refer to product datasheet for full details.

Maintenance requirements and schedule

ACS lintels are designed to be maintenance free and therefore require no scheduled maintenance.

Legal requirements

While ACS exercise a duty of care with regard to our products and supporting professional services, and all ACS products are fully warrantied regarding their performance, it remains the responsibility of the project engineer to determine the suitability of materials, types, and their resultant load capacities.

It is the responsibility of installation contractors and sub-contractors to ensure that their work is carried out to the required industry standards. ACS cannot be held responsible for any failures arising from incorrect installation.

Disposal of non-recyclable materials

Whenever possible, ACS recommends reusing nonrecyclable elements rather than disposing of them immediately. For example, polystyrene infill can sometimes be repurposed for packaging or other construction purposes, depending on its condition and suitability. When reuse is not an option, non-recyclable components should be disposed of through landfill.

Limitations of use

ACS lintels such should only be use on the building where they have been designed for, referring to all technical literature to deem suitability.

End of life

As a material, stainless steel is generally fully recyclable. At such as a time that the product reaches its end of life, generally at the decommissioning stage of the building cycle, ACS can help to advise on product material make up to assist with recycling. Please contact us at this stage and we will be happy to help.



Get in touch to learn more
about how ACS can help
you deliver your next project.

0113 391 8200
info@acsstainless.co.uk
acsstainless.co.uk

 ACS Stainless Steel Fixings Ltd
 ACSStainlessSteelFixings